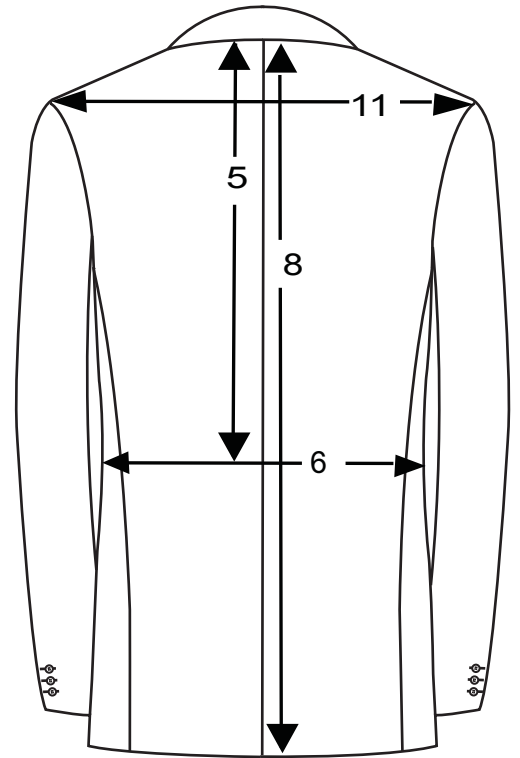
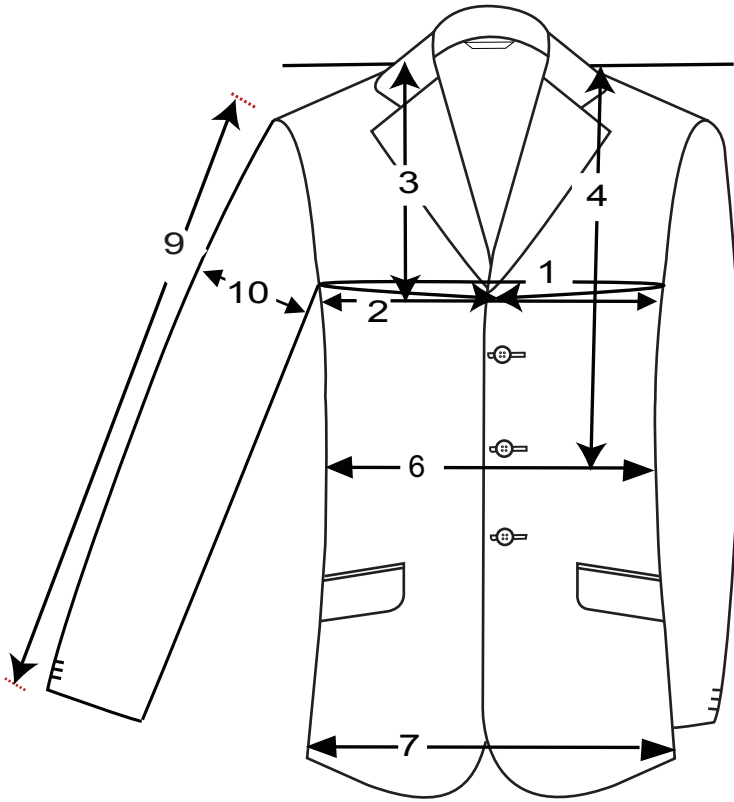


# JACKETS - HOW TO MEASURE

## WOVEN JACKETS



MEASUREMENTS	BODY	GARMENT
1 CHEST CIRCUMFRENCE (fullest part of chest on body; 1" below armhole on garment)		
2 ACROSS CHEST (horizontal width across the front chest, taken from armhole to armhole; fullest part of chest on body; 1" below armhole on garment)		
3 SHOULDER TO CHEST (point where shoulder meets neck at the base of the side of the neck to center of chest line on body and garment)		
4 SHOULDER TO WAIST (point where shoulder meets neck at the base of the side of the neck, over chest to natural waist on body and garment)		
5 CENTER BACK TO WAIST (nape of neck to natural waist on body; center back neck to narrowest part on garment)		
6 WAIST CIRCUMFERENCE (natural waist on body; narrowest part on garment)		
7 HIP CIRCUMFERENCE (fullest part of hip on body; along hemline on garment )		
8 BACK LENGTH (nape of neck at base of collar to bottom of desired hem)		
9 SLEEVE LENGTH (shoulder point to wrist, over elbow w/ slight bend in the customer's arm on body; shoulder point to bottom of cuff on garment)		
10 SLEEVE WIDTH (widest part of bicep on body; 1" below armhole on garment)		
11 FULL SHOULDER (measure across shoulder point to point on body and garment, aligned with armpit)		